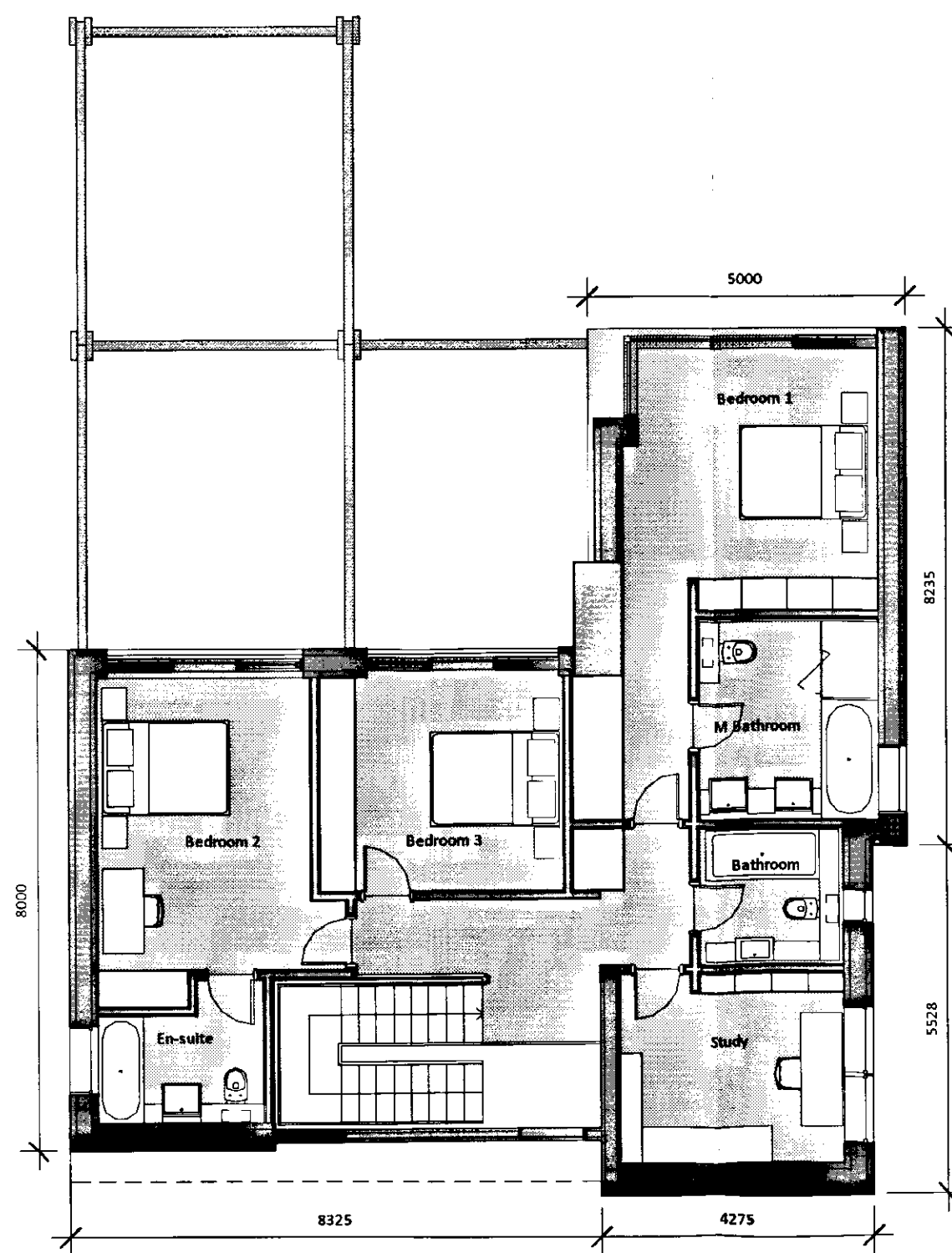


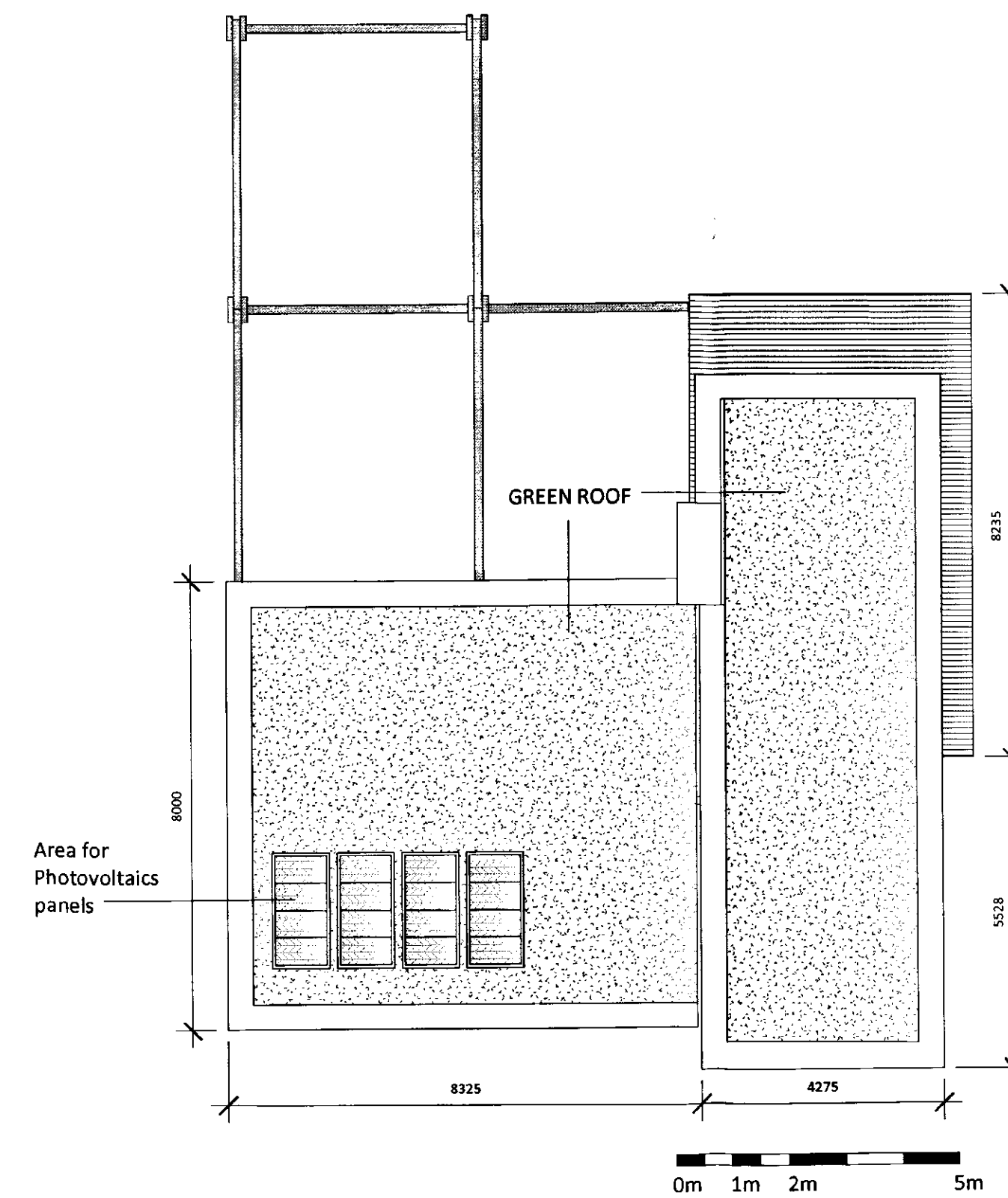
HOUSE 2 - GL
1:100



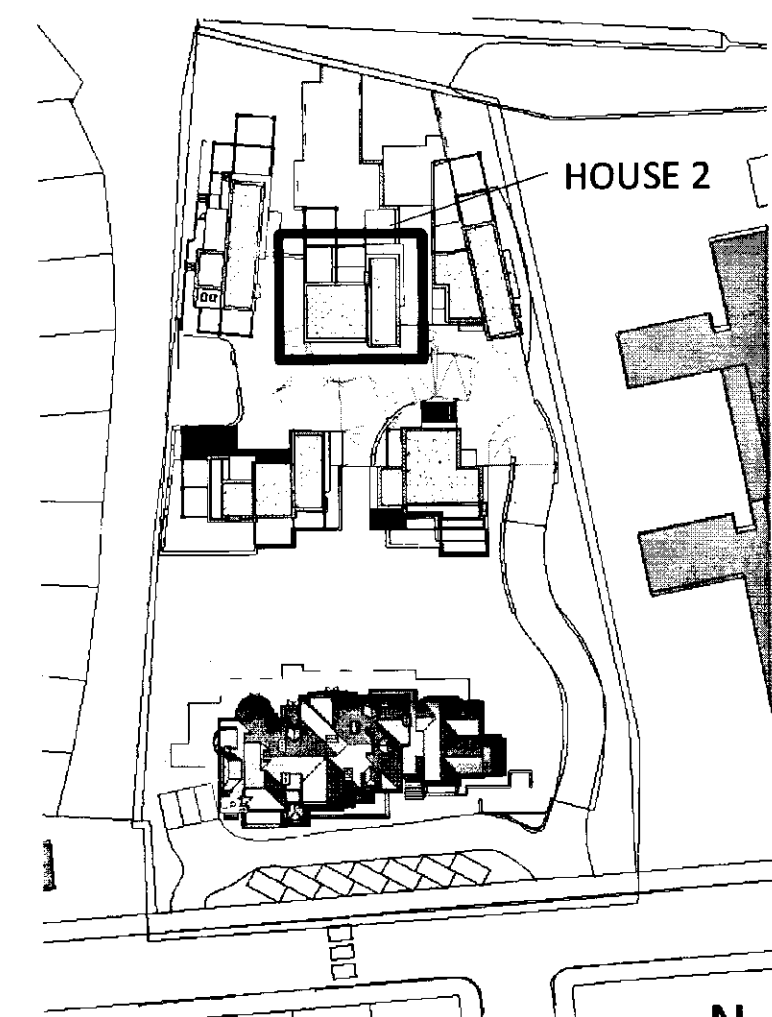
HOUSE 2 - SECTION
1:100



HOUSE 2 - L1
1:100



HOUSE 2 - RL
1:100



REF PLAN - HOUSE 2
1:1000

General notes:

This drawing is copyright of KSR architects. This drawing must be read in conjunction with the design's risk assessment, specification and all other relevant documentation and drawings. KSR architects accept no liability for any expense, loss or damage of whatsoever nature and however arising from any variation made to this drawing or in the execution of the work to which it relates which has not been referred to them and their approval obtained. Do not scale from this drawing or the digital data, only figured dimensions are to be used. For Planning refer to linear scale. Check all dimensions on site.

Notes/Legends

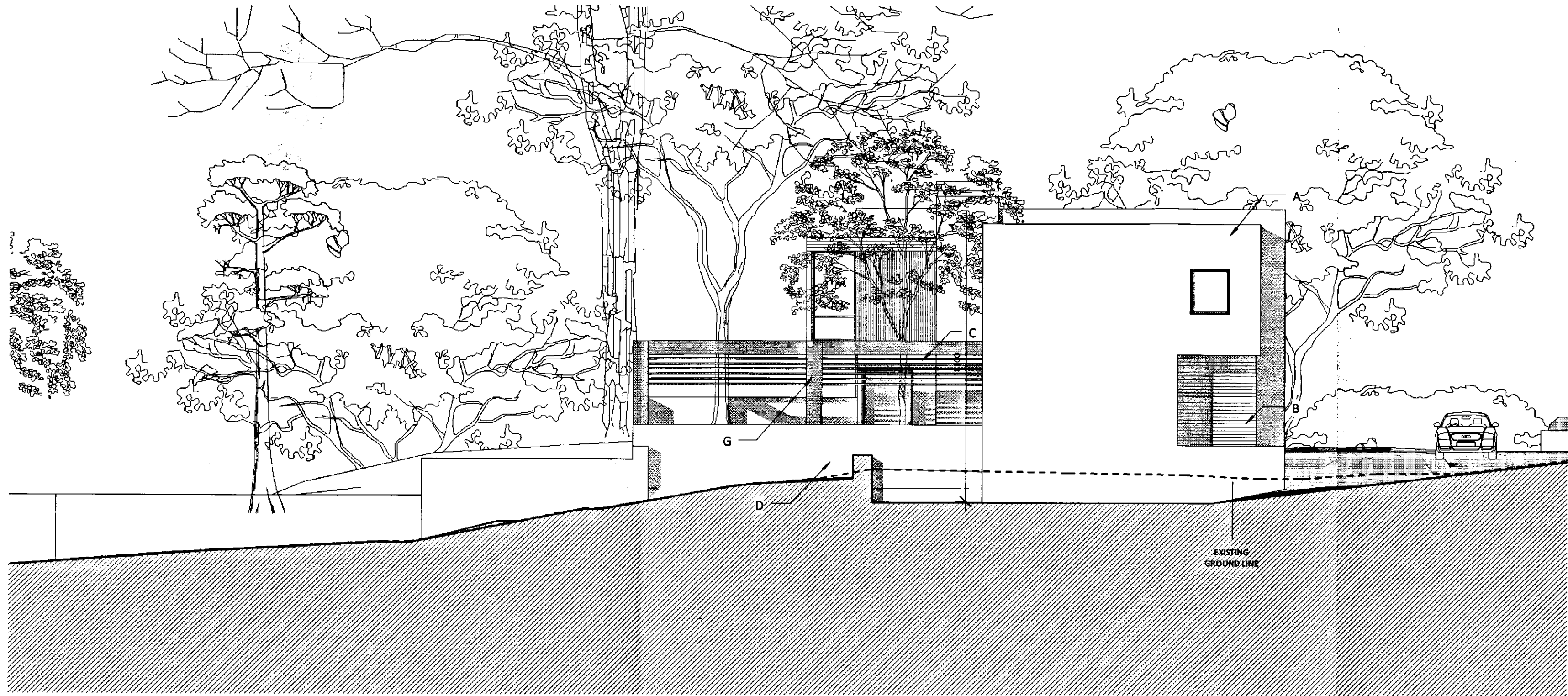
Dwelling type (beds/persons)		Essential GIA (sq.m)	Living/ dining/ kitchen	Separate Kitchen/ diner?	Bed 1 (sq.m)	Bed 2 (sq.m)	Bed 3 (sq.m)	Bed 4 (sq.m)	Bathroom (sq.m)	Entry Level WC	Storage (sq.m)	Study (sq.m)	Open Space (sq.m)	
HOUSE2 (2 storey)	4b7p	LHDG	117.0	31.0	yes	12.8	12.8	12.8	8.4	1	1	1.55	-	10.0
		KSR	188.4	61.5	yes	21.5	17.1	13.4	10.7	3	1	-	-	-
		ALL COMPLIANT												

Stamp

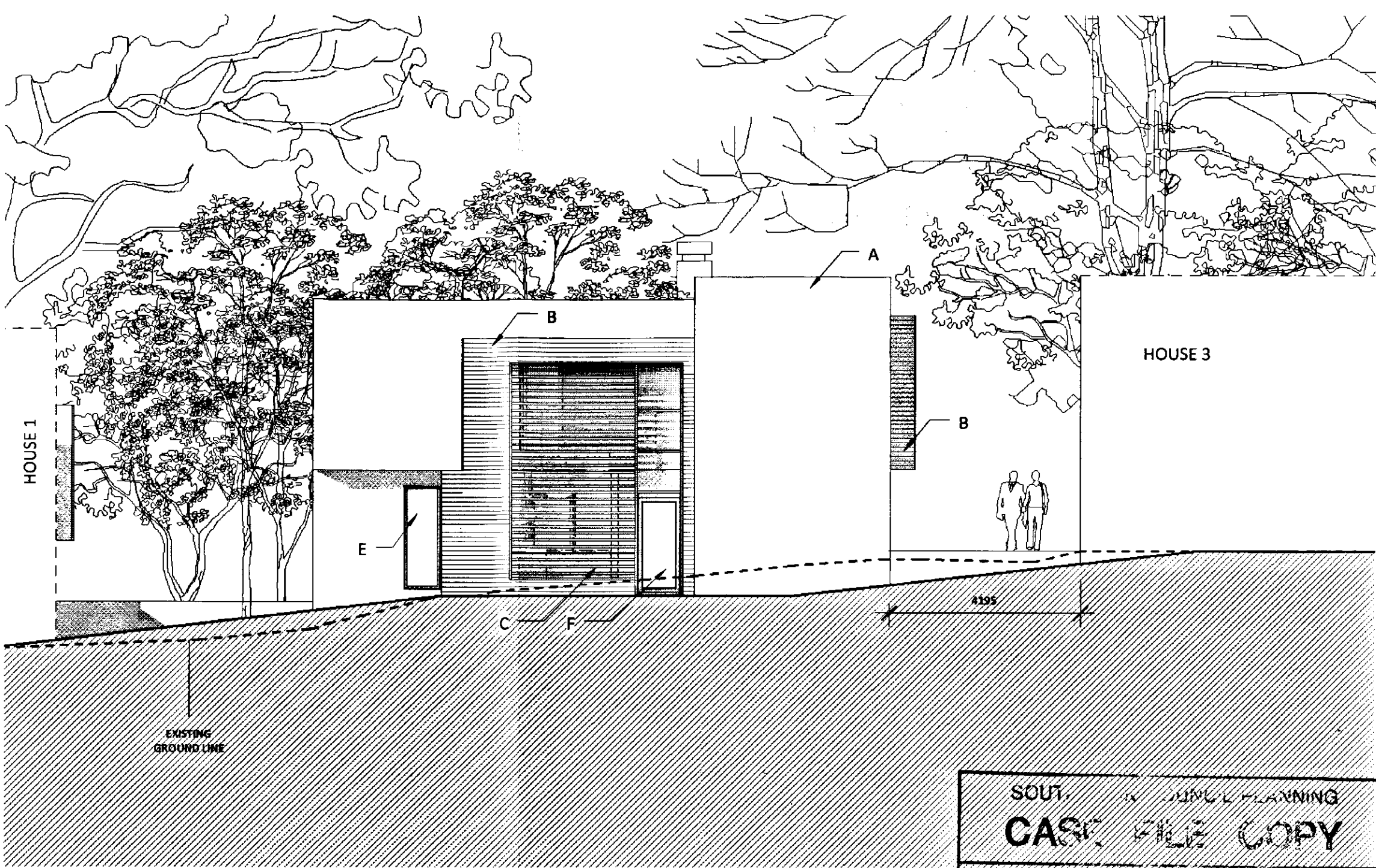
Key Plan

PLANNING APPLICATION
Dec 2010

KSR architects 14 Grosvenor Street London NW1 0HD t: +44 (0)20 7492 5000 f: +44 (0)20 7492 5050 www.ksr-architects.com				KSR architects			
Project: 123 GROVE PARK London				Title: PROPOSED HOUSE 2 - PLANS & SECTION			
Rev	Notes	Date	Dec 2010	Drawn By	LRG	Checked	LRG
Scale: As indicated @A1				Project Ref	GRP	Drawing No	GRP - H2 102

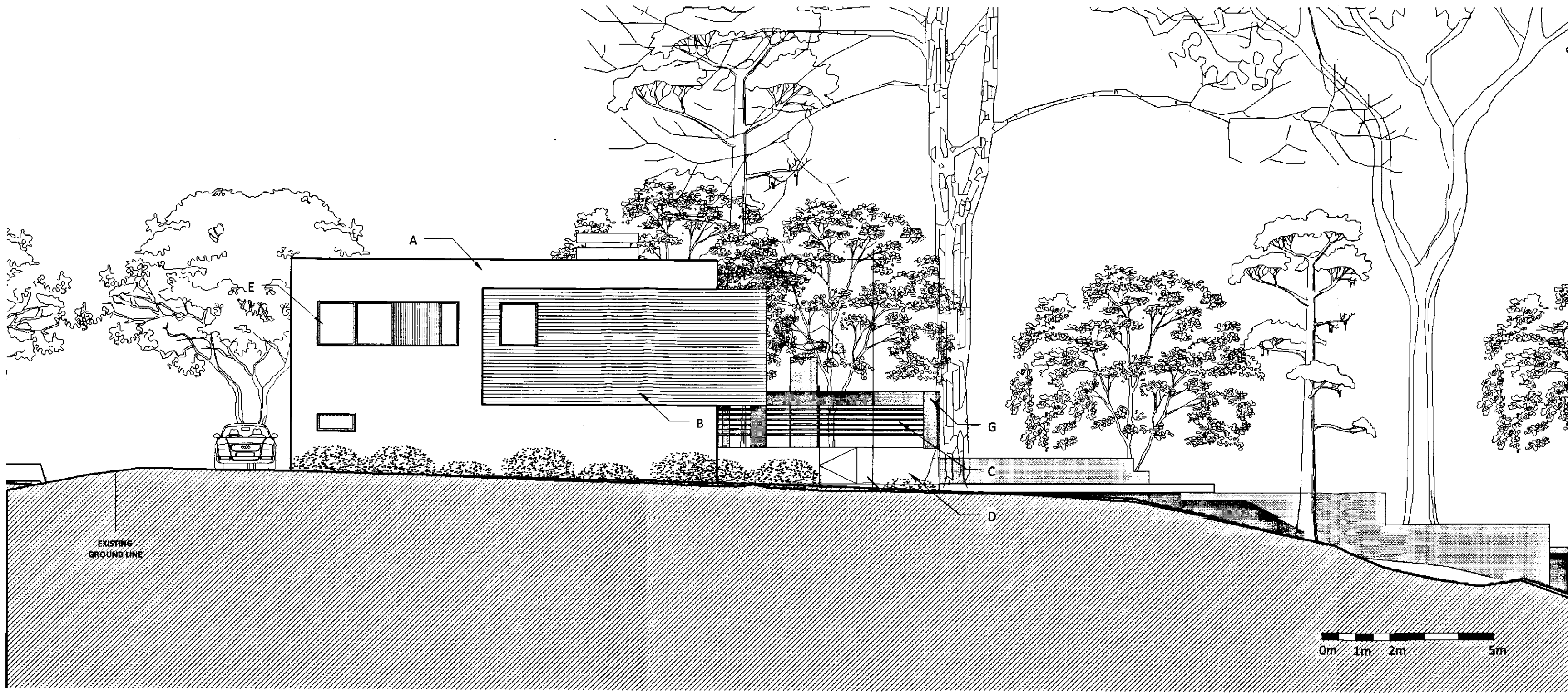


HOUSE 2 - WEST ELEVATION
1:100



HOUSE 2 - SOUTH ELEVATION
1:100

SOUTH ELEVATION PLANNING	
CASE FILE COPY	
DATE RECEIVED	DECISION AND DATE
08 APR 2011	
REGISTERED NUMBER	
AP 37	



HOUSE 2 - EAST ELEVATION
1:100



HOUSE 2 - NORTH ELEVATION
1:100

General notes:
This drawing is copyright of KSR architects. This drawing must be read in conjunction with the design team's assessment, specification and all other relevant documentation and drawings. KSR architects accept no liability for any expense, loss or damage of whatever nature and however arising from any variation made to this drawing or in the execution of the work to which it relates which has not been referred to them and their approval obtained.
Do not scale from this drawing or the digital data, only figured dimensions are to be used. For Planning refer to listed scale.
Check all dimensions on site.

Notes/Legends

KEY LEGEND

- | | |
|---------------------------------|-------------------------------------|
| A - HORIZONTAL FORMAT BRICKWORK | E - PAINTED ALUMINIUM FRAMED WINDOW |
| B - TREATED TIMBER PANELLING | F - HARDWOOD TIMBER DOOR |
| C - TIMBER SCREENWORK | G - TIMBER PERGOLA STRUCTURE |
| D - BRICK PLANTER | |

Stamp

Key Plan

PLANNING APPLICATION
Dec 2010

KSR architects
14 Greenland Street
London
NW1 0ND

T: +44 (0)20 7662 5000
F: +44 (0)20 7662 5000
www.ksr-architects.com

KSR architects

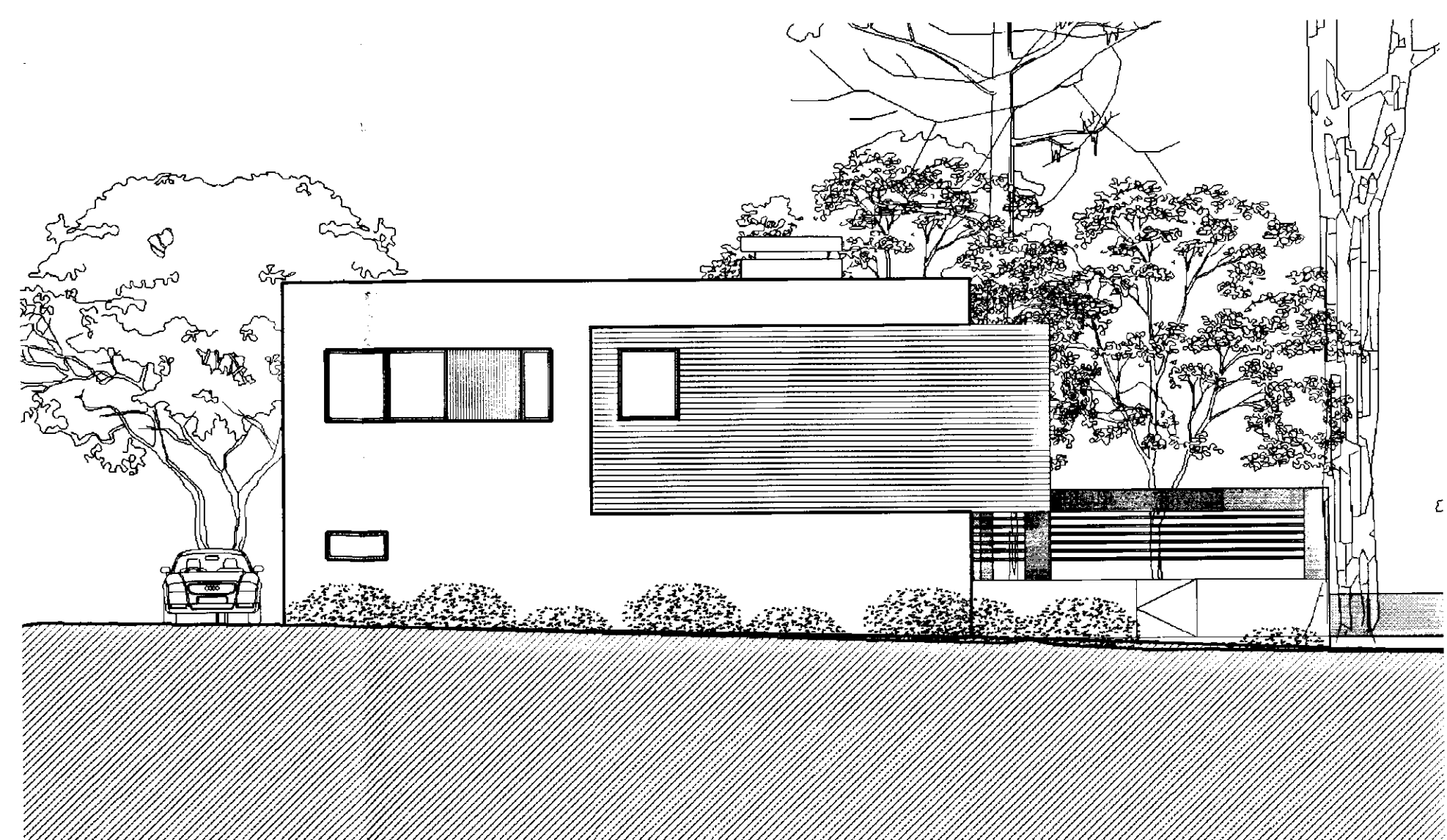
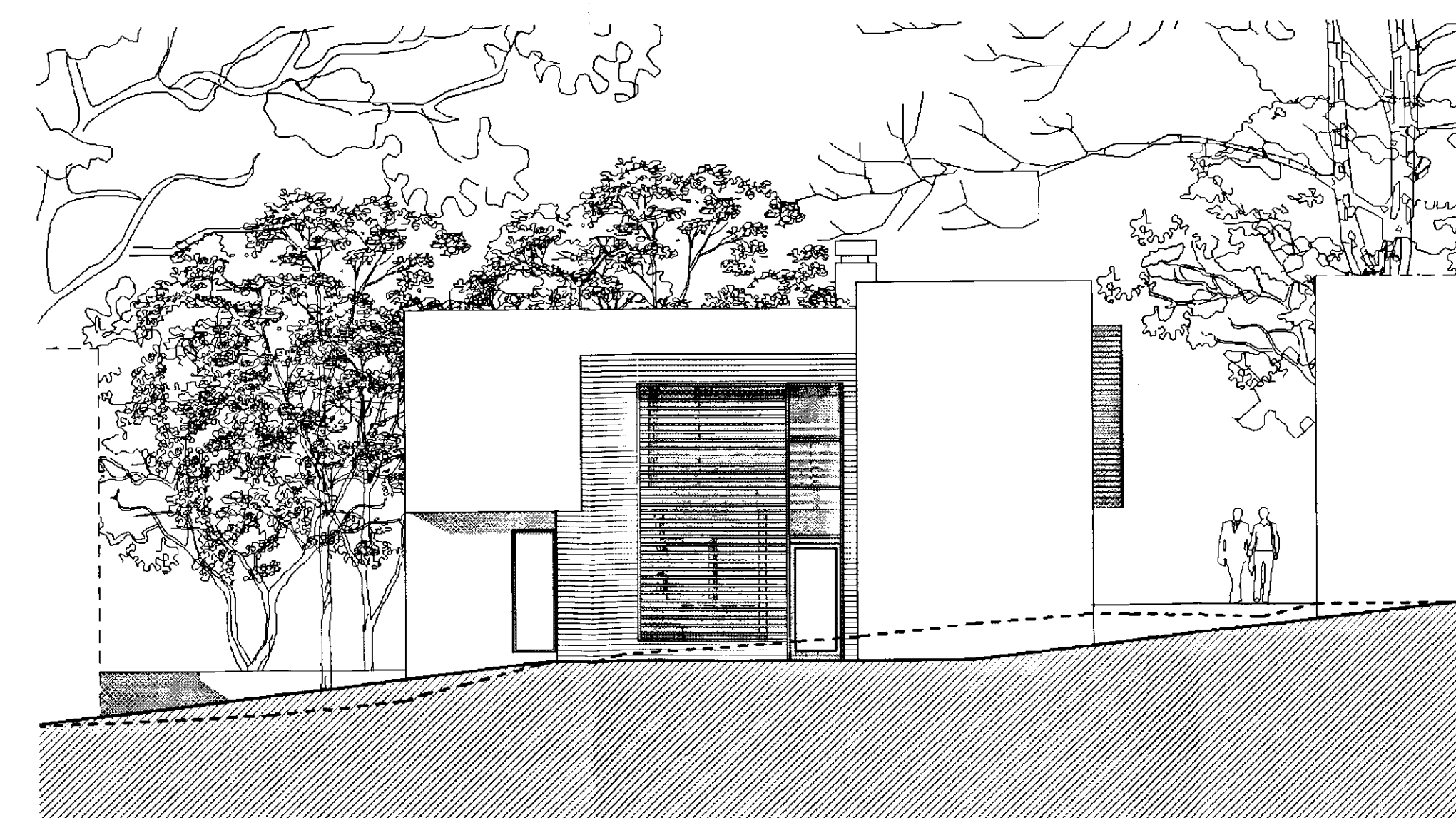
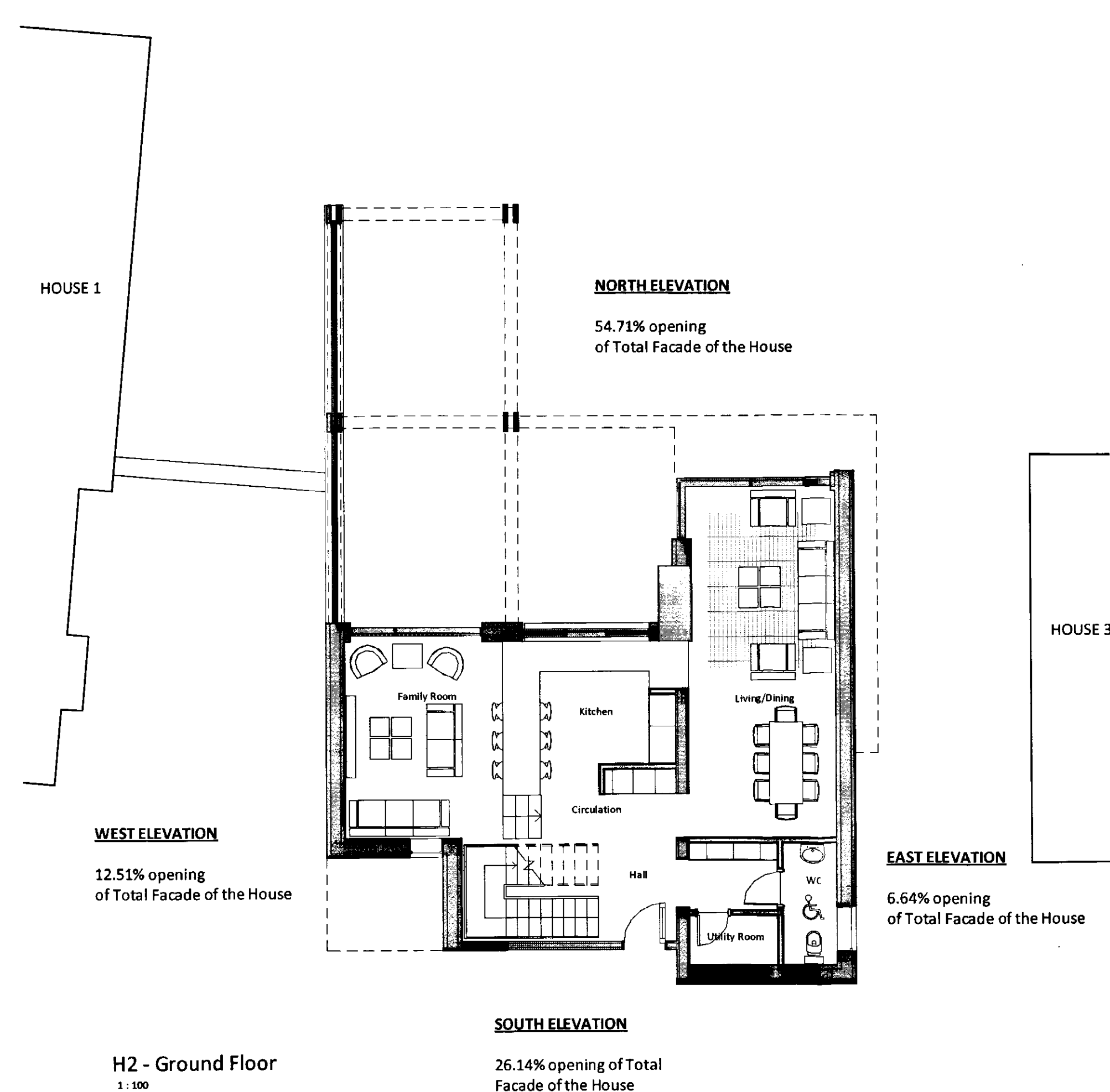
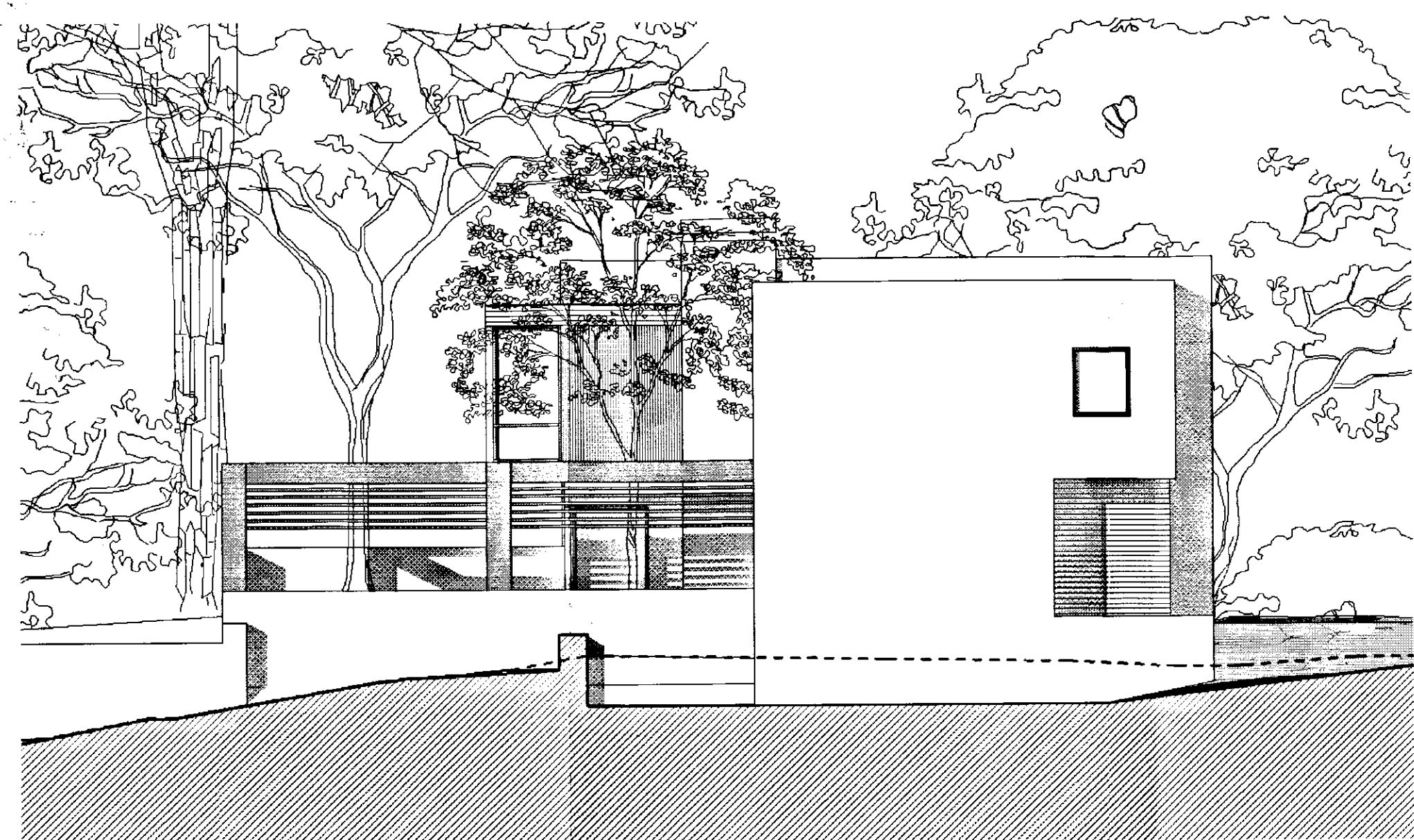
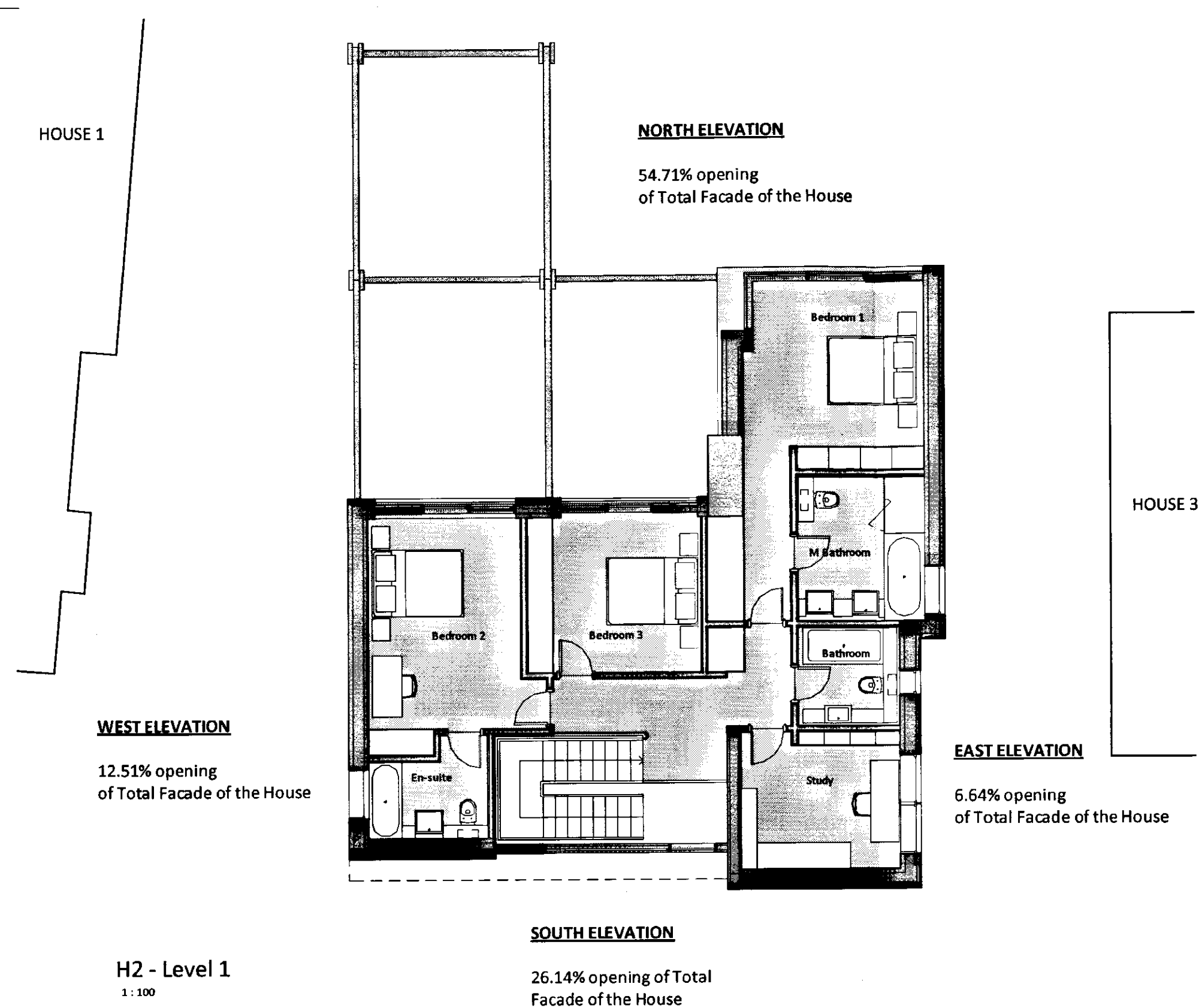
Project:
123 GROVE PARK
London

Title:
PROPOSED HOUSE 2 - ELEVATIONS

Rev: 1
Notes: 1
Scale: 1:100 @A1 / 1:200 @A3

Date: Dec 2010
Drawn By: LRG
Checked: LRG

Project Ref: GRP
Drawing No: GRP - H2 302
Reason:



	North Facade (sq.m)	East Facade (sq.m)	South Facade (sq.m)	West Facade (sq.m)	TOTAL (sq.m)
Total Wall Surface	89.48	82.93	83.88	96.01	352.3
Openings	36.42	4.42	17.40	8.33	66.57
Percentage by Facade	40.70%	5.33%	20.74%	8.68%	18.90%
Percentage of Total	54.71%	6.64%	26.14%	12.51%	

Because the west and east elevations are facing adjoining houses, the window percentage is low. To the garden side elevation is most open 54.71% and on the entrance elevation with a 26.14% of total.

